

WADJEMUP
ROTTNEST IS
WESTERN AUSTRALIA

EDUCATION GROUP GUIDE



ACKNOWLEDGEMENT

Rottnest Island Authority kaadatj Wadjak Noongar moort. Baalap Wadjemup kaaradjiny, baalabang malayin nakolak-ngat wer wirn kalyakoorl noyinand koort boodja-k wer kep-ak. Ngalak kaadatj nedingar, birdiya wer boordakan Noongar moort. Ngalak karnadjil kaadatj maaman wer noba wirn ali kalka ngingow noyiyang Wadjemup ngardak boodja-k. Baalabang moort maambart-boort, ngooni-boort, kongk-boort wer Birdiya-boort.

Rottnest Island Authority acknowledge Whadjuk Noongar families. They Wadjemup caring, their culture and spirits always connected Island-to and water-to.

We acknowledge ancestors, Elders and future Noongar families. We truly acknowledge men and boys' spirits who still remain connected Wadjemup under ground-in. Their family's father-without, brother-without, uncle-without and Elder-without.

Translation courtesy of Sharon Gregory,
Noongar Language Consultant.

All details correct at time of printing
May 2026.

Wanju wadjemup.

Nidja wadjemup whadjuk boodja unna.
welcome to wadjemup,
a place of great significance for whadjuk
nyoongar people, the traditional owners of this
land.

Koora koora whadjuk nyoongar wadjemup wangking woolah! nyoongar w
yeye, benang boordawan. stories have been passed down through gene
long before wadjemup was separated from the mainland around 7000
ago. They still hold great spiritual connections to this place today

Keny nyoongar wangking moodja boorn baranginy noitj
wadjemup wer gnoondiny maamoong djoobool

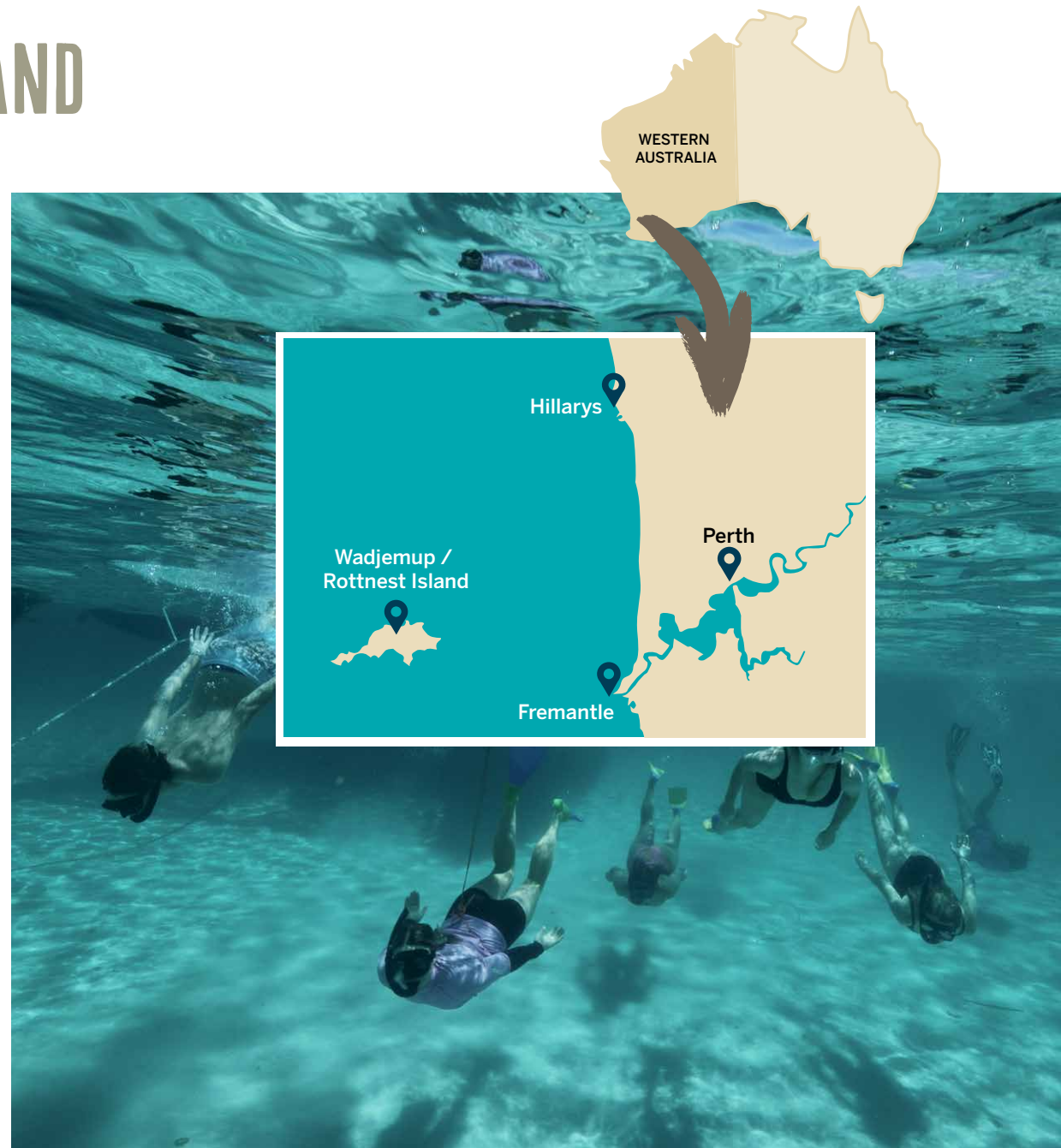
EDUCATION GROUPS ON WADJEMUP / ROTTNEST ISLAND

Engaging Activities Creating Fresh Perspectives

Wadjemup / Rottneest Island offers students a unique learning experience. Away from textbooks, desks, and tests; they're given the chance to learn by doing. Your students can stand in the places where history was made and walk in the wilderness where native flora is regenerating. The various educational tours and activities on the island are designed to re-engage students and ignite curiosity that they can take back to the mainland.

It's only a 30-minute ferry ride to Rottneest Island — a small journey for the wealth of experiences available on the island. Even though the island is close enough for day trips, overnight or multi-day excursions give students the time to open their minds and immerse themselves in a new world of knowledge.

If you're planning a trip with your education group to Rottneest Island, this guide can help you with planning and booking the trip. Simply take a look through to find the experiences which seem most relevant and engaging for your students, then follow the step-by-step planner.



GETTING TO ROTTNEST ISLAND

The Anticipation of Adventure and Knowledge

The short ferry ride across to Rottnest Island is a time for the students to develop camaraderie, share excitement with classmates, and let go of the school environment. Rottnest Island is like a different world, and you begin to feel this change on the journey over.

Travel by Ferry

For education groups, the ferry is the most convenient way to get to the island. The island admission fee is reduced for Australian school-age students.

Rottnest Express

Departs from Northport North Fremantle, B Shed Fremantle (takes 30 minutes) and Perth CBD (takes 90 minutes).

Rottnest Fast Ferries

Departs from Hillarys Boat Harbour and takes about 45 minutes.

SeaLink Rottnest Island

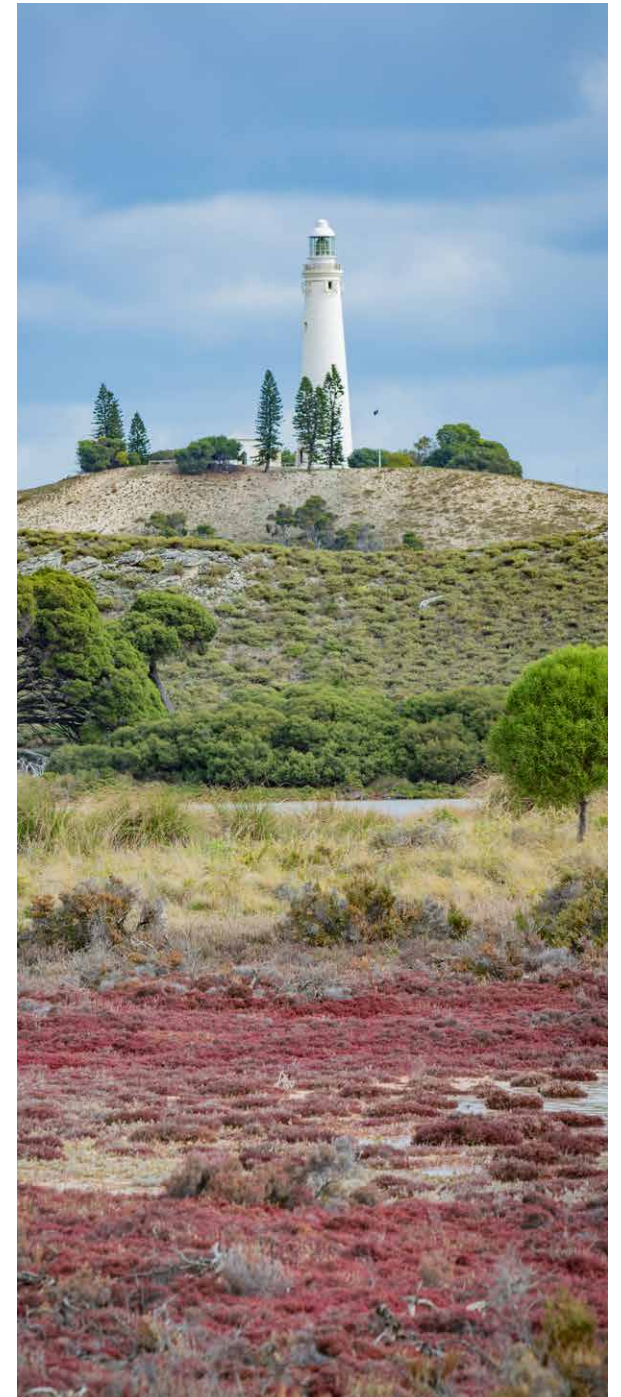
Departs from B Shed Fremantle (takes 30 minutes) or Perth CBD (takes 90 minutes).



WHEN TO VISIT

Educational Experiences for Every Season

Education groups can come to Rottnest Island at any time of year, as the mild climate and combination of indoor and outdoor activities make the island a versatile destination. The island is usually a few degrees cooler than Perth in summer and slightly warmer in winter.



LEARNING EXPERIENCES IN NATURE

A Peaceful Place to Understand the Environment

As a Class A Reserve, the natural environment on Rottnest Island is unique and carefully protected. With five marine sanctuary zones protecting the underwater ecosystem and the Rottnest Island Nursery propagating the native landscape, students can witness conservation and regeneration in action.

Sustainability Education Materialised

When education groups visit, they have the opportunity to see and learn about these sustainability practices in action.

Hydrating the Island

The water people drink and use on the island actually comes from the saline groundwater on the island. With two fresh water sources – Longreach Bay's desalination plant and Wadjemup Aquifer – the whole island, including the landscape, is hydrated sustainably.

Powering the Island with Sun and Wind

As your group travel around the winding paths of the island, they'll see the 600kW wind turbine spinning on Mt Herschel and the 600kW solar farm. These larger-than-life sights tell a very clear story of the Rottnest Island's commitment to sustainability.



GETTING AROUND THE ISLAND

Transport Your Troupe

Rottnest Island is predominantly car-free; however, there are many other convenient ways to transport your school group. While maintaining the tranquillity that a car-free environment creates, the island still has buses to drop your group off at all the main bays and attractions. You can also walk the network of trails on the island (the Wadjemup Bidi) or cycle the roads.

By Bike

Cycling is the most common way to travel the island and take in the natural ecosystem. Bikes can be hired from three of the ferry providers or from Pedal & Flipper who offer a range of bike hire options including e-bikes, and one-day or multi-day hire.

By Foot

Rottnest Island is criss-crossed with a network of walking trails (the Wadjemup Bidi). There are five trails that, when combined, stretch to 45 kilometres, and give your group a chance to wander self-guided amongst the lush island landscape. If your excursion requires a more organised experience, there are plenty of guided tours available.

By Bus

Education groups can be short on time, so if your group needs an efficient mode of transport, buses are a convenient way to get around the island.

Bus Options:

Island Explorer Bus Service

Hop on-hop off bus service, with 19 stops around the island.

Book an Island Explorer Bus ticket online or call (+61) 8 6270 6060.

Accommodation Shuttle Bus

Stops at the accommodation in Geordie Bay, Longreach Bay, Fay's Bay, and Kingstown Barracks.

Get more information on the island's shuttle bus options.

Charter Bus

Hire your own bus to travel around the island and create your own itinerary.

Get more information on the island's charter bus service options.



TEN COMPELLING EDUCATIONAL EXPERIENCES ON WADJEMUP

Engaging Experiences for Lasting Memories

When education groups come to Wadjemup / Rottnest Island, it's often to find a fresh way to teach. The exciting experiences on the island can reinvigorate tired topics and make intangible ideas feel relevant.

1. Delve into History

Head out to historic landmarks like the Wadjemup Lighthouse or Oliver Hill and visit the fascinating Wadjemup Museum.

2. Explore the Underwater World

Take a snorkel in one of the picturesque bays to get some exercise and learn about marine life.

3. Gain Cultural Understanding

Join an Aboriginal-led tour or workshop to give students a deeper understanding of Aboriginal history and the cultural connection with Wadjemup.

4. Engage with Unique Wildlife

There are opportunities to observe wildlife all over the island, including Long Nosed fur Seals, Humpback Whales, and multiple bird species.

5. Hike Through Nature

Whether it's self-guided or on a tour, a hike around the Wadjemup Bidi trails will have amazing views and plenty of teaching moments.

6. Venture onto the Sea

A boat trip provides a perfect team building exercise while you circle the island's coastline and encounter rarely seen wildlife.

7. Witness Sustainability

Stop by the wind turbine, solar farm, or water desalination plant, and learn about the eco-friendly initiatives in action.

8. Cycle the Island

Ride bikes around the island and get the best view of all the educational sights while invigorating students with exercise.

9. Examine Native Vegetation

Walk through the wilderness of the island, marvel at the intriguing flora, and visit the plant nursery for some educational insight.

10. Take a Night-Time Tour

The Stargazing and Twilight Tales tours are both exciting night-time experiences that will present history and night sky facts in an entertaining way.



WHERE TO STAY ON WADJEMUP

Choose the Right Home Base

Staying on Wadjemup / Rottnest Island for more than a day ensures a truly impactful experience for your school group. There's a wide range of accommodation options for whatever type of trip you're creating, including variations on budget, location, and style.

Stay Rottnest Accommodation

Campground

Take your group back to nature and into the peaceful outdoors. There are 43 non-powered sandy sites, a communal camp kitchen, and an ablution block.

Caroline Thomson Cabins

Cosy cabins sitting under the shade of peppermint trees, and located close to the main settlement. Each cabin fits up to 6 people and there's a fully fitted-out kitchen.

Governor Circle

Self-contained cottages near Kingstown Barracks, fitting 9-13 people — makes for a comfortable, more private stay.

Kingstown Dormitories

Affordable dorm accommodation in historic WWII barracks – less than 2km south of the settlement. Ideal for school camps, with plenty of rooms and a friendly, communal atmosphere.

Rottnest Hostel

Also in Kingstown Barracks, the hostel has 50 beds, a fully equipped kitchen, and a lounge.

Glamping and Hotel Accommodation

Discovery Rottnest Island's 83 eco-tents are connected with nature and feature private en-suites and outdoor decks.

Samphire Rottnest is another option for students to experience Rottnest Island's newest accommodation offering 80 luxury beachfront rooms with peaceful decor and an on-site restaurant.

The Lodge Wadjemup offers 109 rooms, with the courtyard rooms located in the historic reformatory building, blending heritage features with modern comfort. All rooms are styled with calm, timeless décor, with an on-site restaurant and kiosk.



GATHERING SPACES FOR YOUR GROUP

Functional Venues for Education Groups

Wadjemup / Rottnest Island has plenty of venue options.

Kingstown Barracks Rooms

- **Main Hall**
Fits groups of 100 to 150 and includes a smart TV.
- **Video Room**
Suitable for 15 to 30 people and includes multimedia equipment.

Peacock Inn

Caters for 25 to 40 people and includes tables, chairs, a small kitchenette, and a whiteboard.

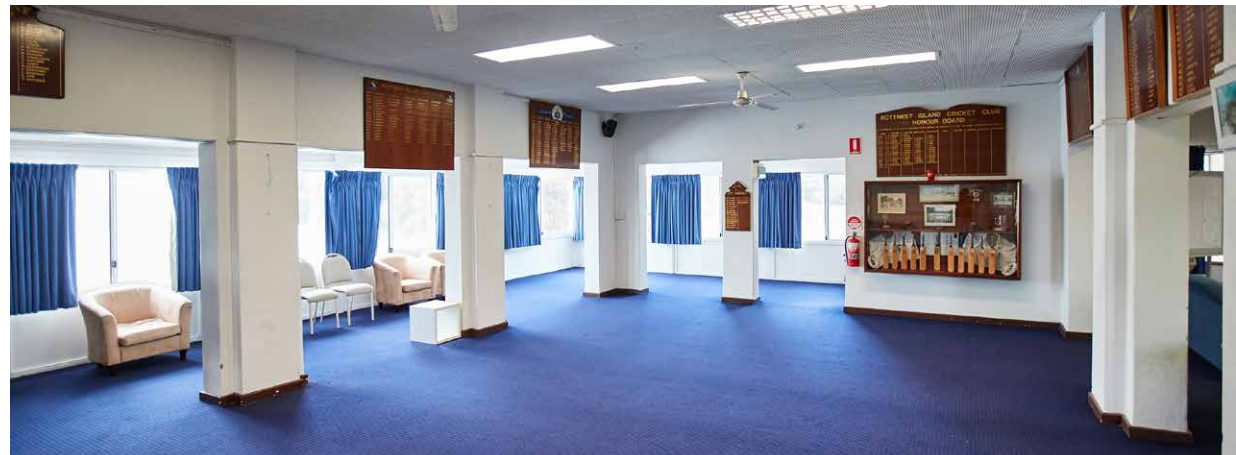
For more information or to book the Kingstown Barracks Rooms or Peacock Inn email group.bookings@rotnnestisland.com.

Rottnest Island Golf Course

This well-equipped collaborative space is located at the Rottnest Island Golf Course with a large meeting room and two outdoor spaces; perfect for larger groups.

Rottnest Island Picture Hall

A historical, nostalgic space located at the Rottnest Movies and can fit large groups. It's a venue for movies located in the main settlement and includes tables, chairs, a small PA system, and a projector and screen.



WHERE TO EAT

Spots to Recharge and Indulge

Wadjemup / Rottnest Island is a self-sufficient place where you can detach from the mainland world for as long as you like, while still enjoying all the food and dining options you desire. There are group rates available and, with so much choice, you'll find an eatery that suits your needs, whether you're treating your team to a high-end meal at an oceanside restaurant or organising sustenance after an outdoor team-building activity.



Group Catering

You can discuss group catering with each venue. There are options to dine-in or even have the catering delivered to other locations around the island. Caters for vegetarian, vegan, halal, lactose intolerant and gluten free requirements.

Options Include:

West Australian Caterers

Kingstown Barracks offers catered packed or delivered lunch options including fresh sandwiches or rolls and fruit.

Frankie's on Rotto

Laid-back, classic meals all day.

Hotel Rottnest

Lively atmosphere, share plates, and views.

Isola Bar e Cibo

Italian beachside dining.

Lontara

South-East Asian dining.

Pinky's Rottnest Island

All day seafood specialties.

Sunsets

Relaxed all day Mediterranean dining.

Geordie's Cafe

Casual, filling breakfast, lunch and dinner.

Subway

Classic sub sandwiches that everyone is familiar with.

Rottnest Bakery

Iconic pastries, fruit, and barista coffee.

The Lane

Smoothies, acai bowls, and fresh to-go meals.

Please note: It's important that you book your group in advance as each venue has different capacity limits.



TAKE AN EDUCATIONAL TOUR

A School Trip with Expert Insight

Wadjemup / Rottneest Island is full of experts in various fields, whether it's sustainability, history, or the natural environment. Join an island tour led by one of the island's specialists and head out for an enlightening journey or even a relaxing off-duty exploration.

Tours on Water

Charter 1 – Sailing tours

Pair marine facts with an exciting trip on a sailing catamaran, keeping the students engaged and subtly learning. Find the hidden idyllic spots on the island as you sail around the coast, stopping to snorkel, kayak, and stand-up paddleboard along the way.

- Departure point: Fuel Jetty, Thomson Bay
- Duration: 2.5 to 3 hours
- Maximum number of people: 37
- Seasonal availability: Tours operate November to April

Eco Express Boat Tours

Invigorate sustainability and eco-lessons with a trip on a high-powered speed boat. There are three different tour options: the Adventure Boat Tour, Thrill Boat Ride, and the Whale Watching Adventure Tour. The Adventure Tour is the most environment-related and will provide insightful commentary as you go.

- Depart from: Main Jetty, Thomson Bay
- Maximum number of people: 42 (can do multiple tours on request)
- Seasonal availability: Tours operate November to April. Whale watching tour available from September to mid-November only.

Rottneest Snorkel – Snorkelling Tours

Learn how to snorkel as you're guided through the amazing, protected bays seeing colourful corals and exotic fish life, all while qualified snorkelling instructors look after you and teach you the skills and techniques to snorkel.

- Departure point: Fuel Jetty, Thomson Bay
- Duration: 3 hours
- Seasonal availability: Tours operate October to April



TAKE AN EDUCATIONAL TOUR CONTINUED

Tours on Wheels

Paul's ECO Bike Tours

This tour focuses on educational topics and is completely customisable, so you can choose to enjoy Wadjemup's flora and fauna, sustainability practices, or the history of the island.

- Departure point: Rottneest Island Visitor Centre
- Duration: 4 hours
- Maximum number of people: 30
- Seasonal availability: Operates all year round

Rotto Rickshaws

Explore Wadjemup in a fun and educational way with guided e-rickshaw tours. Cruise past heritage buildings, coastal landmarks, and military sites while hearing stories about the island's environment, culture, and history.

- Departure from: Rotto Rickshaw Hub on Colebatch Ave, Thomson Bay
- Duration: 90 minutes
- Maximum number of people: 20
- Seasonal availability: Tours operate 3 times per day, 7 days a week between 9 am–5 pm

Segway Tours WA

These eco-friendly vehicles add a bit of light-hearted fun to your educational tour of the island. Glide along discovering intriguing historical and environmental facts about the passing sites such as heritage buildings of the Settlement or the military heritage of Bickley Battery.

- Depart from: Main settlement location or the sports oval on request
- Duration: 1 to 1.5 hours
- Maximum number of people: 20
- Suitability: from ages 12 years old
- Seasonal availability: Operates all year round



TAKE AN EDUCATIONAL TOUR CONTINUED

Tours by Bus

Discover Rottnest Bus Tours

This bus tour has the most insightful commentary shining a light on Rotto's unique flora and fauna stopping at the rugged West End, where you can stretch your legs and soak up the expansive views.

- Departure point: Main Bus Stop, in the main settlement
- Duration: 90 minutes

Quokka Coaches Bus Tours

An efficient and comfortable way for your education group to experience the island. These bus tours take an in-depth look at the landscape and history, a scenic trip with knowledgeable commentary.

- Departure point: Main Bus Stop, in the main settlement
- Duration: 1.75 to 4 hours
- Maximum number of people: 34 or 42-seater buses available — multiple tours per day available upon request
- Seasonal availability: Tours operate all year



TAKE AN EDUCATIONAL TOUR CONTINUED

Tours by Foot

Go Cultural – Wadjemup Aboriginal Tours and Experiences

Take your education group on a journey of understanding with an Aboriginal tour of Wadjemup. Walk with Go Cultural on Wadjemup to hear an insightful Aboriginal-told story highlighting the cultural significance of the island in relation to its ancient history and recent Aboriginal prison past.

- Departure point: Visitor Centre
- Duration: 60 mins
- Minimum number of people: 10
- Seasonal availability: Tours operate from September to July

The Hike Collective

The Hike Collective offers bespoke guided tours along the network of trails, so you can plan what parts of the island you would like to explore. The tours cater for all ages and abilities, with options from 5 to 18 kilometre hikes.

- Departure point: Various
- Duration: 1 hour to 2 days
- Maximum number of people: 15
- Season availability: Operates all year round



TAKE AN EDUCATIONAL TOUR CONTINUED

Rottnest Voluntary Guides Association

There are several different walking tours with the voluntary guides, providing options for different educational topics and student age groups.

Bickley Battery

Let the coastal views from the military watchtower sink in as the guide draws the crowd to attention with stories from where they stand. Their wealth of knowledge brings to life the tangible reality of the site.

- Meeting location: Kingstown Barracks
- Tour numbers: Maximum of 25
- Duration: 50 minutes

Oliver Hill Gun and Tunnels

Take your band of explorers down into a maze of underground military tunnels, and watch silence fall as they learn about these gritty, mechanical remnants of World War II.

- Meeting location: Oliver Hill
- Tour numbers: Maximum of 25
- Duration: 50 minutes

Pioneers and Prisoners

The stories of Wadjemup / Rottnest Island in the 1800s are told with deep respect and acknowledgement. From the use of the island as a place of incarceration and a boys' reformatory, to early European voyages.

- Meeting location: RVGA Information Booth
- Tour numbers: Maximum of 25
- Duration: 50 minutes

Reef, Wrecks, and Daring Sailors

Energise history lessons with tales of treasure, drowned ships, and treacherous sea journeys. Beginning at Salt Store, you'll walk to view coastline-forming events and the exploration of early European vessels.

- Meeting location: RVGA Information Booth
- Tour numbers: Maximum of 25
- Duration: 50 minutes

Stargazing

In the peace and seclusion of Rottnest Island, far from the lights of the city, this night time oasis offers a star display like no other. Watch your group settle into the stories of constellations forming, minds boggling with new space knowledge.

- Meeting location: RVGA Information Booth
- Tour numbers: Maximum of 25
- Duration: 50 minutes



TAKE AN EDUCATIONAL TOUR CONTINUED

Twilight Tales

Venture out at dusk and hear about the legends of the island. This walk is a unique night time perspective on the heritage sights and origin stories, with a more chilling option for older age groups.

- Meeting location: RVGA Information Booth
- Tour numbers: 25
- Duration: 50 minutes

Wadjemup Lighthouse

Venture to the highest point on Rottne, where the exposure of the windblown viewing platform will inspire awe in even the most sceptical of your troupe.

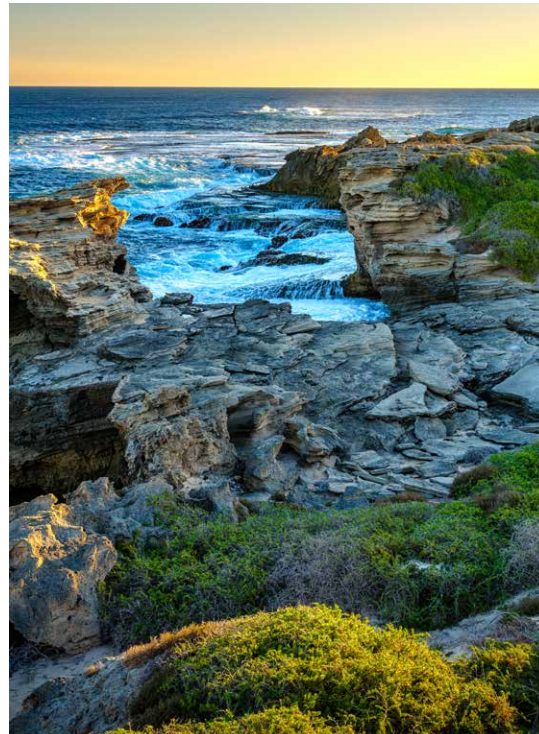
- Meeting location: Wadjemup Lighthouse
- Tour numbers: Maximum of 10
- Duration: 30 minutes



Whitecaps and Wilderness

The classroom comes alive with stories told in nature. Warm currents igniting sea life, secretive creatures in the undergrowth, ancient tree roots from the island's beginning; there's more to the natural world than what you see.

- Meeting location: Parker Point (bus stop 5)
- Tour numbers: Maximum of 25
- Duration: 50 minutes



Rottne Voluntary Guides Association – Bicycle Tours

Tours with the voluntary guides are some of the most intriguing and educational options available and the guides are used to keeping large groups of students engaged.

Behind the Scenes

Visitors are often unaware of the unseen cogs steadily working to keep Wadjemup / Rottne Island clean and green. Take a breezy cycle across the island and develop your group's understanding of these vital sustainability systems.

- Meeting location: RVGA Information Booth
- Tour numbers: Maximum of 15
- Duration: 1.5 hours

Sustainability Tour

Rottne is an exceptional example of unsustainable practices in the 19th century having an impact on the island more than 150 years later. On the other hand, it is also a wonderful example of the implementation of sustainable practices to provide its modern services. The tour visits facilities as for the Behind the Scenes Tour with an emphasis on sustainability.

- Meeting location: RVGA Information Booth
- Tour numbers: Maximum of 15
- Duration: 1.5 to 2 hours

The Changing Face of Rottne

Set off on your bikes to explore the island's wilderness, following the story of Rottne's eco-evolution. See the real-world results of eco-friendly projects, connecting these abstract ideals to the dirt and grit of working with nature.

- Meeting location: RVGA Information Booth
- Tour numbers: Maximum of 15
- Duration: 2 hours

ACTIVITIES ON WADJEMUP

Keep Students Entertained and Engaged

Wadjemup / Rottnest Island has many valuable experiences, not only tours but other outdoorsy or educational activities as well. Sometimes the students will need a break from learning or a cooling swim to refresh their minds on a hot day, and when they do there are countless recreational options.

Barefoot Bowls

At the Rottnest Island Public Golf Course there's a full sized green for barefoot lawns bowls.

- Maximum number of people: 60
- Seasonal availability: Operates all year round

Captain Hussey Train Ride

Add some excitement to the trip out to Oliver Hill by taking the island's Captain Hussey train. This vintage train leaves from train station in the main settlement and trundles peacefully across the landscape, offering spectacular views as you're transported to your historic destination.

- Location: The main settlement
- Maximum number of people: 64
- Seasonal availability: Operates all year round

Dooga Waalitj Healing

Venture on a cultural immersive experience of Aboriginal history. Listen to stories of Wadjemup roots, history and impact of the past. Get hands-on in an art workshop exploring traditional symbols, their meanings, and cultural significance.

- Departure point: Various
- Duration: 30 to 90 mins duration
- Seasonal availability: Operates all year round



ACTIVITIES ON WADJEMUP CONTINUED

Koorda's Crew

Get creative and curious with Aboriginal-led workshops. Try bush tucker, learn Noongar words, and paint traditional symbols as you listen to the powerful stories behind them.

- Location: In front of Wadjemup Museum for Children
- Duration: 50 minutes
- Minimum number of people: 12 children and 4 adults
- Seasonal availability: Operates all year round

Mirliny

Learn the stories behind the creation of Wadjemup and the six Noongar season, from Birak to Kambarang. Students will see how the seasons change trends and look at the animal's patterns and traditional Noongar activities.

- Location: Kingstown Barracks and Kwob Wirin-up
- Duration: 60 - 90 minutes
- Group programs available upon request.
- Seasonal availability: Operates all year round

Rottnest Movies

The cinema has deckchairs set up in a quaint heritage building, providing nostalgia for the adults and a classic new experience for the younger ones. Settle in for one of the latest blockbusters while nibbling on popcorn or a choc bomb.

- Location: The main settlement
- Maximum number of people: 200
- Seasonal availability: Operates all year round



ACTIVITIES ON WADJEMUP CONTINUED

Rotto Racket Sports

Introduce students to pickleball, a court game that serves up fun with ease. The sport combines elements of tennis, badminton and table tennis with simple rules, students can pick up the game quickly.

Group programs available upon request.

- Location: Bathurst Tennis Courts
- Seasonal availability: Operates all year round

Surfing WA Surfing Lessons

Take your students out of the classroom and into the surf with Surfing WA's Rottnest program. These surfing lessons are a great introduction to the sport or a fantastic way to progress students who have already have some skills.

- Location: Salmon Bay
- Duration: Minimum of 1 hour
- Maximum number of people: 24
- Seasonal availability: Terms 1 and 4

Travelling T-shirts

Book a workshop run by an experienced teacher and professional graphic designer for your group to create a Travelling T-shirt. Students reflect on their visit and create a memento to take home with them or even wear it while they are on camp. Workshops are tailored to create either a travelling t-shirt or a hat and students can work with a template or design from scratch. Everything is planned and supplied, so teachers can kick back and just supervise, enjoying a well deserved break while Travelling T-shirts takes over. Students will walk away with their own unique design on a hat or t-shirt to reflect their Rottnest Island experience.

- Location: Kingstown
- Ideal Group Rotation Size: 20 students (this can be varied upon contact with Travelling T-shirts)
- Seasonal availability: Terms 1, 2, 3 and 4. Some school holiday options available upon request



ACTIVITIES ON WADJEMUP CONTINUED

Wadjemup Museum

The newly refurbished Wadjemup Museum is an unmissable experience. Take the students on a journey through the past, learning about the rich and complex history of Wadjemup. Stories of imprisonment and survival are told through artefacts, photographs, and a moving film presented by Aboriginal Elders. This kind of introduction to the island stays with you long after you return to the mainland.

- Location: The main settlement
- Maximum number of people: 20
- Seasonal availability: Operates all year round



PLAN YOUR VISIT

Planning a visit to Wadjemup / Rottne Island is easy. Simply use the information in this guide and follow the checklist below.

1. Decide on the length of your visit, will you come for the day or stay overnight?
2. Select your dates, remember to check the Rottne Island events calendar to see what events are on.
3. Plan your visit using this guide and the suggested itineraries.
4. Review the Excursion Management Plan to assist with completing your education group plan.



9 Months in Advance

- If you are planning an overnight visit and staying in Kingstown Dormitories, Governor Circle or the Rottne Hostel, book in your accommodation. Bookings for other Stay Rottne accommodation opens on the first business day nine months in advance. To book visit stayrottnest.com.

3 Months in Advance

- Book your transport, both return ferry travel and any transport to get around on the island including bus, bicycles or train.
- Confirm availability and book tours and activities you plan to take.
- If you are planning to do something different such as a triathlon email events@rottnestisland.com to check if any approvals are required.
- Contact island food and beverage businesses to book meal and food requirements for your trip.

2 Weeks in Advance

- Prepare students, staff and helpers with a briefing session. Remember to cover important information such as interaction with wildlife, protection of the environment, emergency plans and safety protocols, as well as anything outlined in your education group plan.
- Confirm all your bookings and ensure prepayments or deposits are finalised.

1 Week in Advance

- Check the weather and ensure students, staff and helpers come dressed ready for the conditions.
- Download or print maps and itineraries.
- Provide staff and helpers with emergency and key contacts.
- If you're planning to ride bicycles, ensure the class is aware of road rules including keeping to the left.

WADJEMUP / ROTTNEST ISLAND

WADJEMUP BIDI WALK TRAILS

- Accommodation
- Toilets
- Accessibility toilets
- Baby change facility
- Changing Places facility
- Coffee station
- Drinking fountain
- Food & Beverage
- Surfing
- Fishing
- Snorkelling
- Barbecue
- Bike repair station
- Tennis courts

BIKE RIDES

- Gabbi Karniny Bidi (9.5 km loop, 3-4 hrs)
- Karlinyah Bidi (5.7 km one-way, 2-3 hrs)
- Ngank Wen Bidi (7.8 km loop, 3-4 hrs)
- Ngank Yira Bidi (10 km one-way, 3-4 hrs)
- Wardan Nara Bidi (9.8 km one-way, 3-4 hrs)
- Bike ride 1 (4 km, 30 mins)
- Bike ride 2 (10 km, 1.5-3 hrs)
- Bike ride 3 (22 km, 3-5 hrs)

Roads
Tracks
Train line
Settlement



Rottnest Island is 11 km in length

CONTACT US

For more information about education groups on Rottnest Island, please contact education@rotnnestisland.com

[#rotnnestisland](#) rotnnestisland.com

