

Rottnest Island Authority

Thomson Bay South Accessible Accommodation (Villa 218)

- 'Wheelchair friendly' unit located in Thomson Bay South accommodation area, level access off street and in close proximity to South Thomson Bay beach.
- Three bedroom unit, with two single beds in each room.
- Level access spacious bathroom suitable to accommodate a mobile hoist.



Location: Unit 218 Vlamingh Way, Thomson Bay South, Rottnest Island.

GIS: 50J eastings 362460 / northings 6458667

Telephone: Rottnest Island Authority central reservations phone (08) 9432 9111 or 1800 111 111 – Regional Western Australia only.

Web: www.rotnesstisland.com
[Accommodation Map](#)

Closest public transport:

- Main Bus Stop

External access: Direct access off Vlamingh Way.

Front Entrance:

Gate:

- Level access through a 850mm wide gate directly off Vlamingh Way onto a level brick paved and concrete courtyard.
- Full height gate with ring style latch at sitting height.

Verandah:

- There is sufficient space on the verandah to store an electric mobility scooter ('gopher'), there is no external electric power point to charge the scooter, however there is an internal power point near the bathroom window through which a power cord can be passed. The switch is at high standing height.

Front door:

- 35 mm step at front door.
- 820mm swing and flywire door, lever handle at sitting height, key lock at sitting height.
- Large internal locking snib at sitting height.
- The refrigerator is located next to the front door and may restrict access for wheelchair users.

Front courtyard:

- Clothes line at high standing height, accessed over brick paving.

Rear Entrance:**Rear door:**

- Level access onto concrete rear verandah.
- The rear door is 810mm wide, has a lever handle and key lock at sitting height. Flywire also provided.

Gate:

- External access to the rear gate is across concrete and brick paved area.
- The half height rear gate is 900mm wide, large lever latch which drops down 130mm onto a soft sandy area along the ocean front. Overlooking South Thomson Bay. Beach access pathway located nearby.

Kitchen:

- Galley style kitchen off the living area.
- 850mm bench height.
- 1250mm between benches with recessed toe space between benches.
- There is 880mm wide knee clearance under sink to accommodate a wheelchair. One shallow sink is provided.
- 720mm forward reach across bench to power point located 300mm above the bench.
- 460mm reach to long lever tap.
- Upright gas stove, 900mm high with front mounted controls.
- Microwave at high standing height, with an alternative location (with power point) under the bench.

**Living area:** Combined sitting and dining with moveable furniture.

- 450mm high couch with armrests.
- Dining table and seats without armrests.
- There is sufficient space for wheelchairs to move through the living area.
- Gas heater with controls at sitting height.
- TV wall mounted and with a \$25 security bond a remote control provided.



Bedrooms: Three bedrooms accessed directly off the living area.

Doors: Door widths are 800mm with lever handles. There is sufficient space for wheelchairs of all sizes to move into the bedrooms.

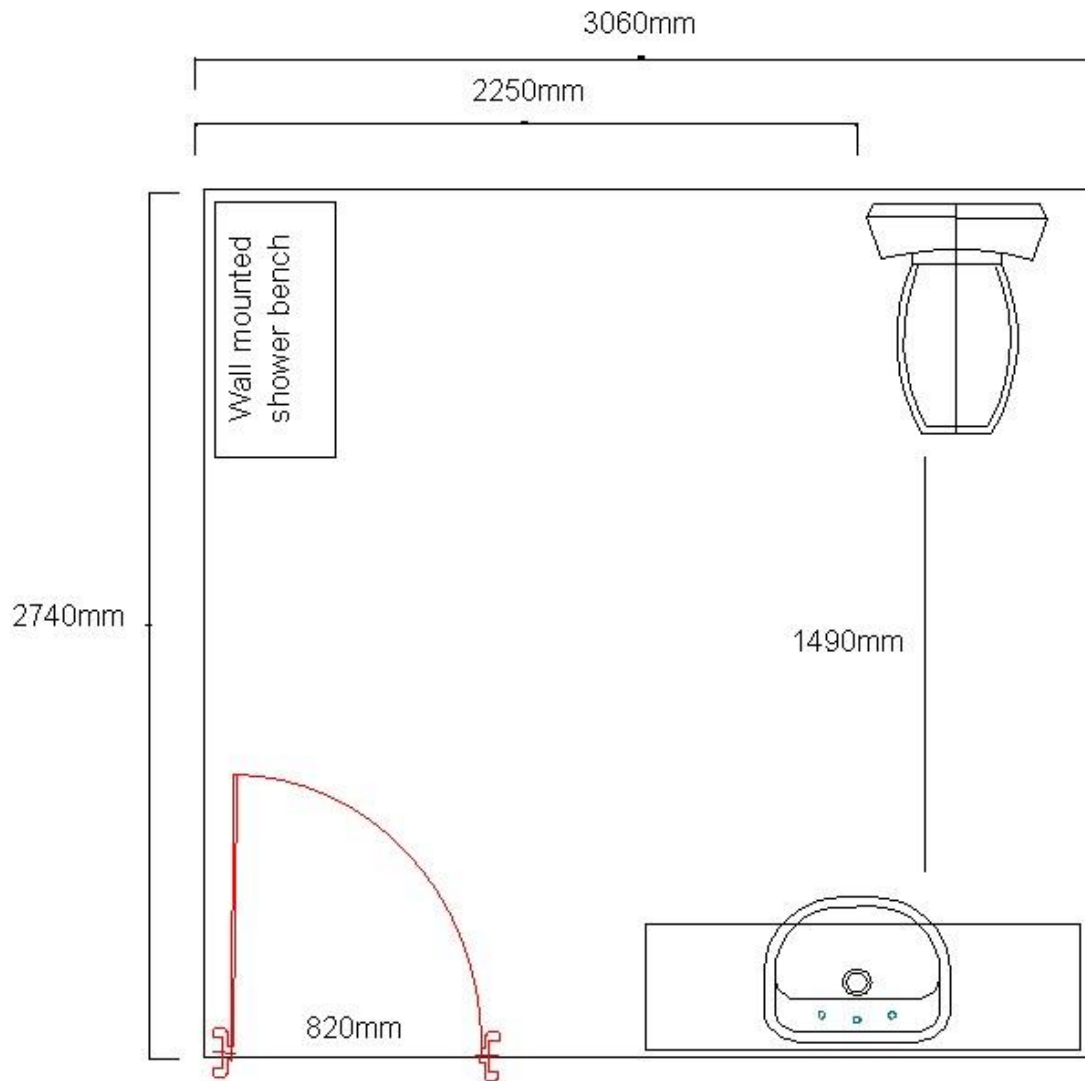
Bed: All rooms have two single beds. These can be zipped together to make a Queen size bed. This should be requested at time of booking.

- 550mm high and soft.
- Approximately 1100mm space between beds.
- Light and fan switches at sitting height.
- Hanging space in two of the bedrooms is at 1180mm (reached from sitting).
- Two bedrooms have angled mirrors at sitting height

Accessible bathroom: Large spacious bathroom.

- Door: 820mm wide entrance door with a lever handle at sitting height.
- Pan height: 470mm.
- Basin height: 800mm.
- Shower: Hand held shower on a sliding rail. Wall mounted fold up seat, 460mm high.
- Coat hooks: Two coat hooks at high standing height.
- Power point: At high standing height.
- Light switch: At sitting height.
- Mirror: At sitting height, base at 1000mm.





Information: 'Welcome to Rottnest Island' file in units with guest information has black lettering on white background in an easy to read 12 point font.

Unit facilities:

- Light switches at sitting height.
- Lowered hanging space.
- Beach access over sand to South Thomson Bay.
- Large spacious bathroom.

Information collected for Rottnest Island Authority in October 2007.
Care has been taken to ensure the accuracy of this information however no guarantee is given that the facility is fully accessible.
Please advise the Rottnest Island Authority of any access changes since publication.

'You're Welcome WA Access Initiative' © Disability Services Commission 2007

