

# Rottnest Island Authority

## **Bathurst Accessible Accommodation (Unit 544)**

### **Summary:**

- 'Wheelchair friendly' unit located in Bathurst accommodation area.
- Step ramp off street to verandah, ramped access into unit.
- Two bedroom unit, with two single beds in each room.
- Ramp into bathroom with wall mounted folding shower bench, handheld shower hose and grab rails.



**Location:** Unit 544, Macedon Avenue, Bathurst, Rottnest Island.

**GIS:** 50J eastings 362273 / northings 6459660

**Telephone:** Rottnest Island Authority central reservations phone (08) 9432 9111 or 1800 111 111 – Regional Western Australia only.

**Web:** [www.rotnnestisland.com](http://www.rotnnestisland.com)

### **Closest public transport:**

- Main Bus Stop.

### **Front entrance:**

#### **Gate:**

- Kerb ramp with a gradient of 7.1° (1:8) at gate.
- 900mm wide half height gate leads a level paved courtyard.
- Gate latch at sitting height.

#### **Verandah:**

- There is sufficient space on the verandah to store an electric mobility scooter ('gopher'), there is no external electric power point to charge the scooter, however there is an internal power point, at standing height, near the front window through which a power cord can be passed.

#### **Entrance door:**

- Step ramp at front door with a gradient of 7.1° (1:8). No landing at door.
- Front door and flywire door width of 840mm.
- The flywire door has a lever handle at sitting height.
- The main door has a D style handle and is opened with a key at sitting height. This is a one handed operation. Internally there is a pull handle with finger grips only.
- Access through the front door and into the unit is suitable for wheelchairs of all sizes.

**Rear entrance:****Rear courtyard:**

- Concrete area with clothes line lowered to 1400mm.

**Rear door:**

- There is a 2m long external ramp with no landing and a 20mm lip at the doorway. The ramp gradient averages 1:23.
- Rear door has a flywire with small locking latch at sitting height.
- Rear door has a lever handle with small locking snib at sitting height.

**Kitchen:**

U shaped kitchen with 1100mm between benches. There is a recess at the base of kitchen cupboards suitable to accommodate wheelchair footplates. This recess is 300mm high and 130mm deep.

- 890mm bench height.
- 550mm reach to the power point, located in a corner.
- Gas stove 890mm high with side mounted controls.
- Taps 460mm from front of benches.
- Microwave at standing height.



**Living area:** Combined sitting and dining with moveable furniture.

- 460mm high couch with armrests.
- Dining table and seats without armrests.
- Wall mounted gas heater with controls at floor level.
- TV is located at standing height. No remote control.



**Bedrooms:** Two bedrooms.

Doors: Door widths are 820mm.

Bed: Both rooms have two single beds:

- 500mm high and soft.
- 600mm space between beds.
- One room has light switches at the head of the bed.
- Both bedrooms have lowered light switches
- Both bedrooms have fan controls at standing height.

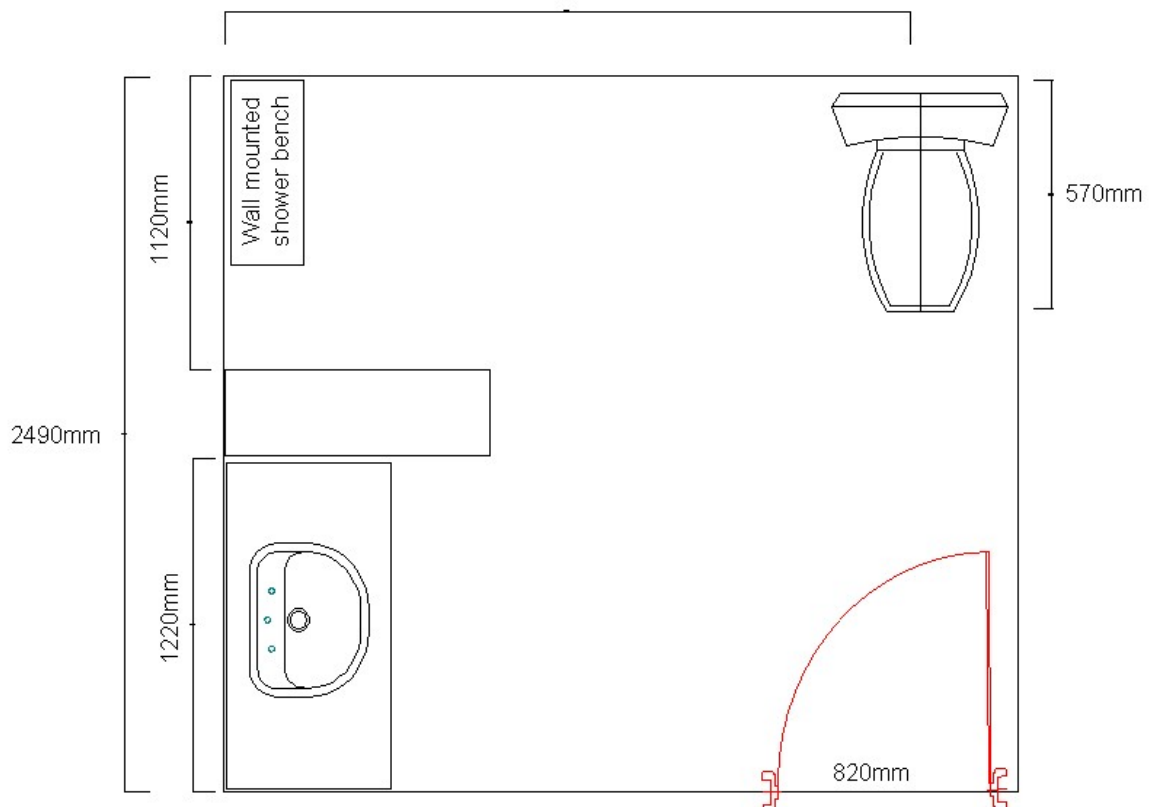
- Both bedrooms have mirrors at sitting height and hanging space at standing height.

### Accessible bathroom:

- External access: There is a 400mm ramp with a gradient of 5.7° (1:10) at the bathroom door. Access into the room may be suitable for a medium size wheelchair only due to the narrow entrance corridor.
- Door: 820mm wide swing door.
- Pan height: 470mm high.
- Basin height: 780mm.
- Shower: Hand held shower and wall mounted fold down seat.
- Coat hooks: At high standing height.
- Mirror: Angled mirror 200mm above bench. Power point 1200mm above floor level.



2220mm



**Information:** 'Welcome to Rottnest Island' file in units has information has black lettering on white paper, has an easy to read 12 point font.

**Unit facilities:**

- High wall mounted TV with no remote control.
- Lowered light switches.

**Information collected for Rottnest Island Authority in April 2007.**

**Care has been taken to ensure the accuracy of this information however no guarantee is given that the facility is fully accessible.**

**Please advise the Rottnest Island Authority of any access changes since publication.**

'You're Welcome WA Access Initiative' © Disability Services Commission 2007

